



**PUMP TECHNICAL
SERVICES LIMITED**



THE SUBMERSIBLE PUMP SPECIALISTS

MANUFACTURING | SALES | PROJECT DESIGN | INSTALLATION | MAINTENANCE AND REPAIRS

Hebefix mini

COMPACT LIFTING STATION





HEBEFIX MINI - CODE NO. JP48727

IT HAS THE RIGHT DIMENSIONS TO FIND SPACE IN SMALLEST ROOMS

? You want a lifting system that needs little space and is still powerful? Then you have made the right choice with the **Hebefix mini**.

The smallest member of our Hebefix range can be installed quickly and easily and finds its place, for example, in a vanity unit or next to a shower. Condensate from chilled display counters and air-conditioning systems can also be pumped with the Hebefix mini.

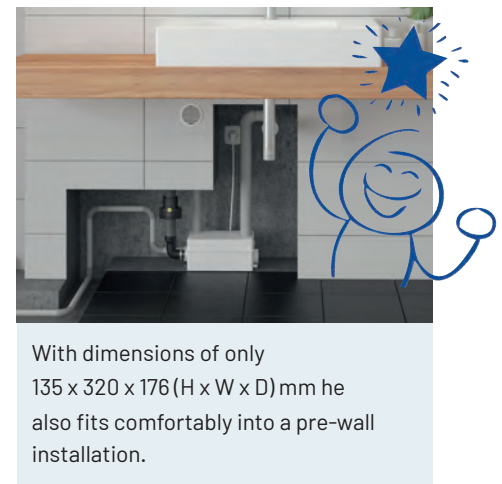
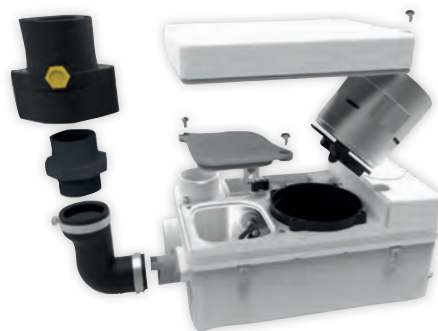
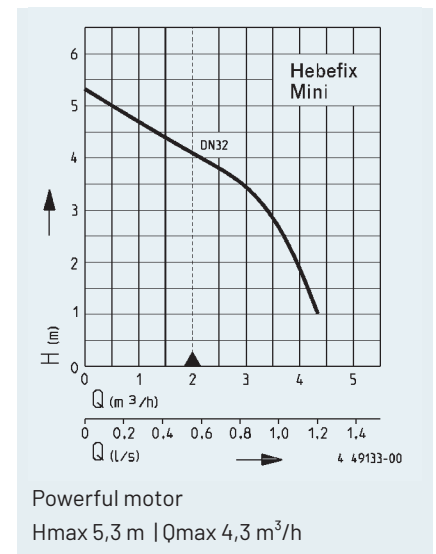
Three inlets (2x DN 50, 1x DN 40) and a pressure outlet DN 32 make the Hebefix mini a flexible device.

APPLICATION AREAS:

- > hand basin
- > shower
- > bidet
- > chilled display counters
- > air-conditioning systems
- > dishwasher in tea kitchens

TECHNICAL FEATURES:

- > pressure-tight tank
- > integrated tank ventilation
- > hot water up to 55 °C (short time 70 °C)
- > quiet operation
- > wall or floor mounting
- > accessories: alarm unit



With dimensions of only 135 x 320 x 176 (H x W x D) mm he also fits comfortably into a pre-wall installation.

